

©  
**CompliBear**  
Putting AI in IA function





# Problem Statement



## Voluminous Transactions

Dealing with large volumes of transactional data that are impractical to review manually and leading to limitations of sampling risk.



## System Bottleneck

Absence of ready information leads to inaccurate accounting in the books and incorrect base information for decision-making.



## Improper Documentation

Maintaining efficient audit documentation and workpapers with supporting evidence can be a daunting task. Additionally, keeping them inline to the audit trail and logs to reconstruct activities poses a huge challenge.



## Timeline Limitations

The timeframe to audit and report is generally very low. This requires robust systems, interfaces and governance process. Lack of such system may lead to adverse effects on the data quality, reliability, and accessibility and final report thereof.





# Challenges in Scaling Up



# Solution ...?



Innovation Unleashed: AJA Labs



Lack of Reusable Artifacts

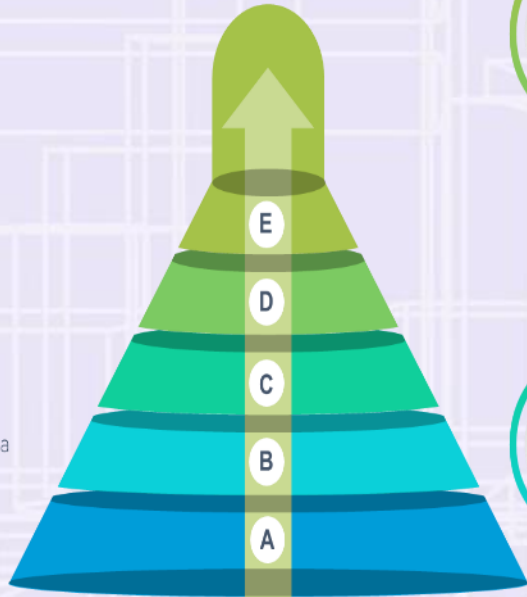


Undefined KPI & Metrics



Voluminous Transactions & Data Sources

Delays and Lack of Data enabled Decision-Making



80% of time spent on Data Preparation



The Pilot Paradox



Improper Uncomplete Documentation

ACFE\* recommended **CompliBear**<sup>®</sup>

**58%**  
Detect Frauds 58% faster

**79%**  
Increased risk assessment by 79%



**8730**  
Save 8730 minutes of a work month that is spent on putting together reports

**52%**  
Experience 52% lower losses

\* ACFE 2022 Report to Nation recommends Data Monitoring/Analysis tools such as CompliBear



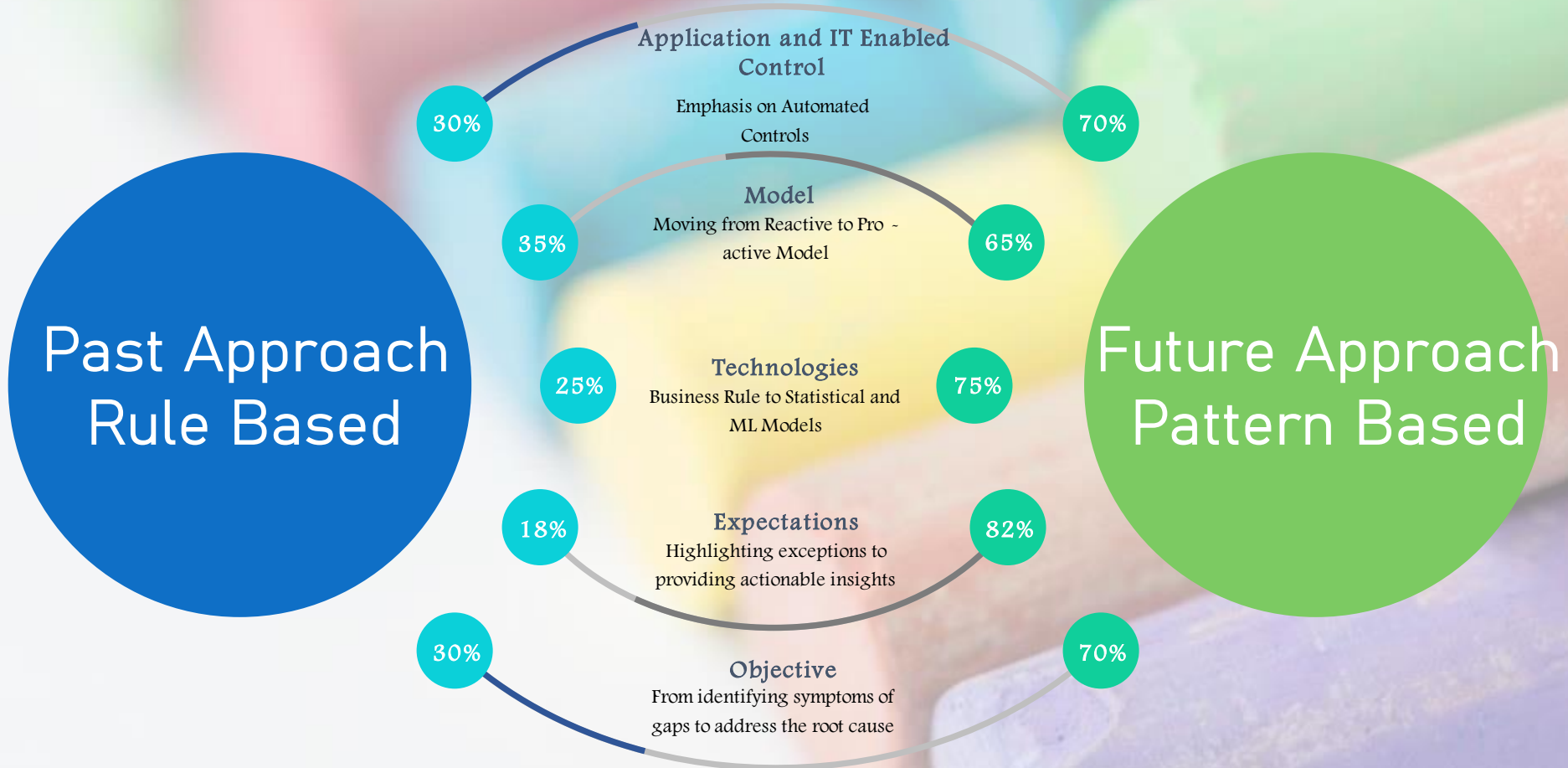


# Introducing a COSaaS™ (Customisable & Orchestrated Services as a Software) ●●●●●





# Our Flagship Product – CompliBear<sup>©</sup>





# Scale up as per your needs



PRESCRIPTIVE •

01

AJA Cognition Labs package runs on advanced algorithms to execute outcome-based predictions and define opportunities for best course of action



PREDICTIVE •

02

AJA flagship product CompliBear<sup>®</sup> automates the business decision and forecasting for the management by AI/ML models



DIAGNOSTIC •

03

Conducting automated RCA and identifying factors/ causes for the correlation and troubleshooting



DESCRIPTIVE •

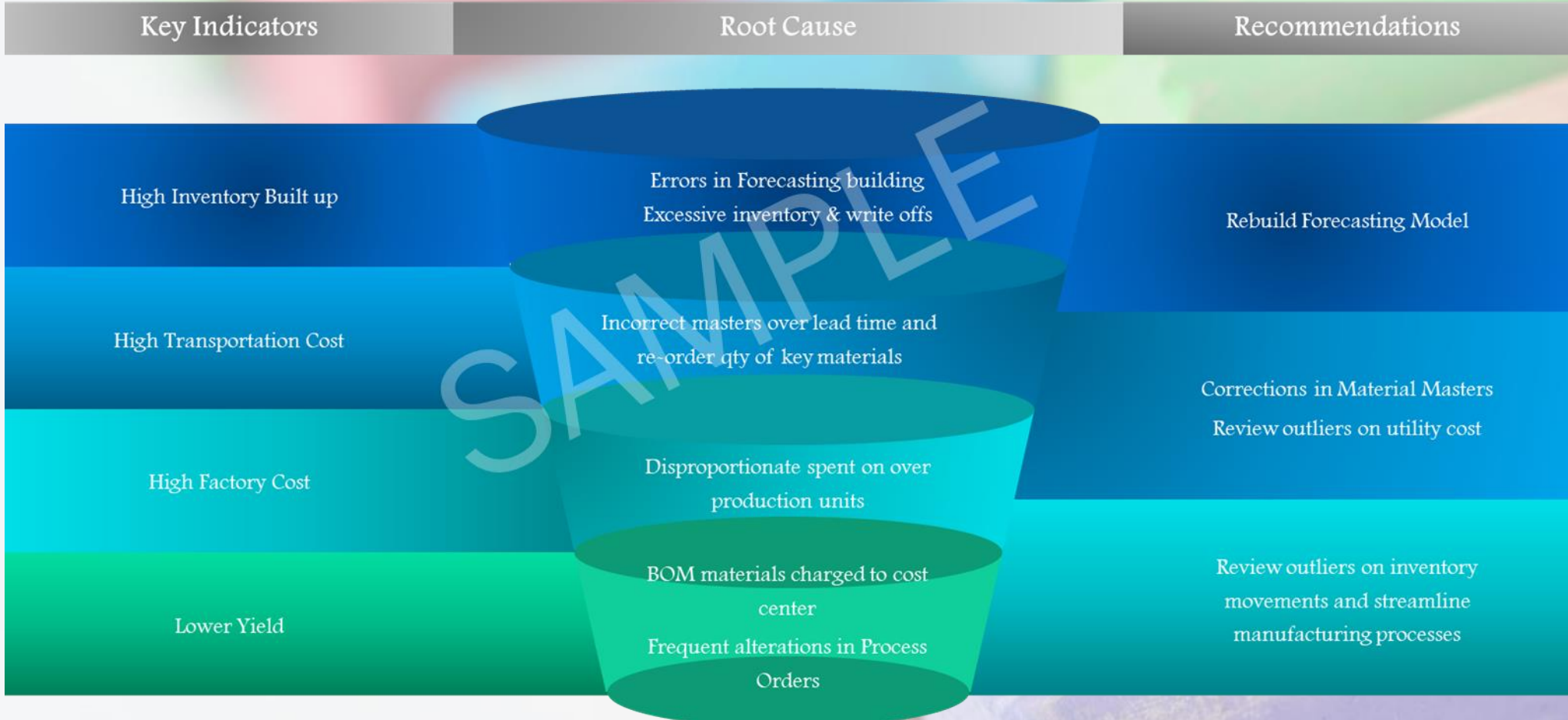
04

Using AJA Labs Data Analytics models, generated on standard rules and checks to showcase all the exceptions for what happened in the past





# Achieving Utopia – Artificial intelligence meets business excellence

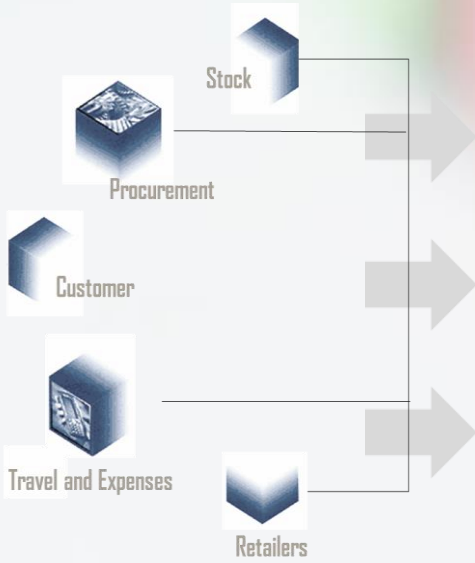




# Features Overview



Innovation Unleashed: AJA Labs



Tailored Access

All KPI's View

All Risk Views

All KPI Based Migration

Escalation & Revision



www.ajalabs.ai







# CompliBear<sup>©</sup> : Key Focus Areas



Reduce Costs &  
Quicker response to  
business and market  
changes



Better compliance  
with Regulations



Accelerate shift  
toward digital  
business



Improved use of data  
driven decision-  
making



www.ajalabs.ai

Innovation Unleashed: AJA Labs





# Key Technological Features

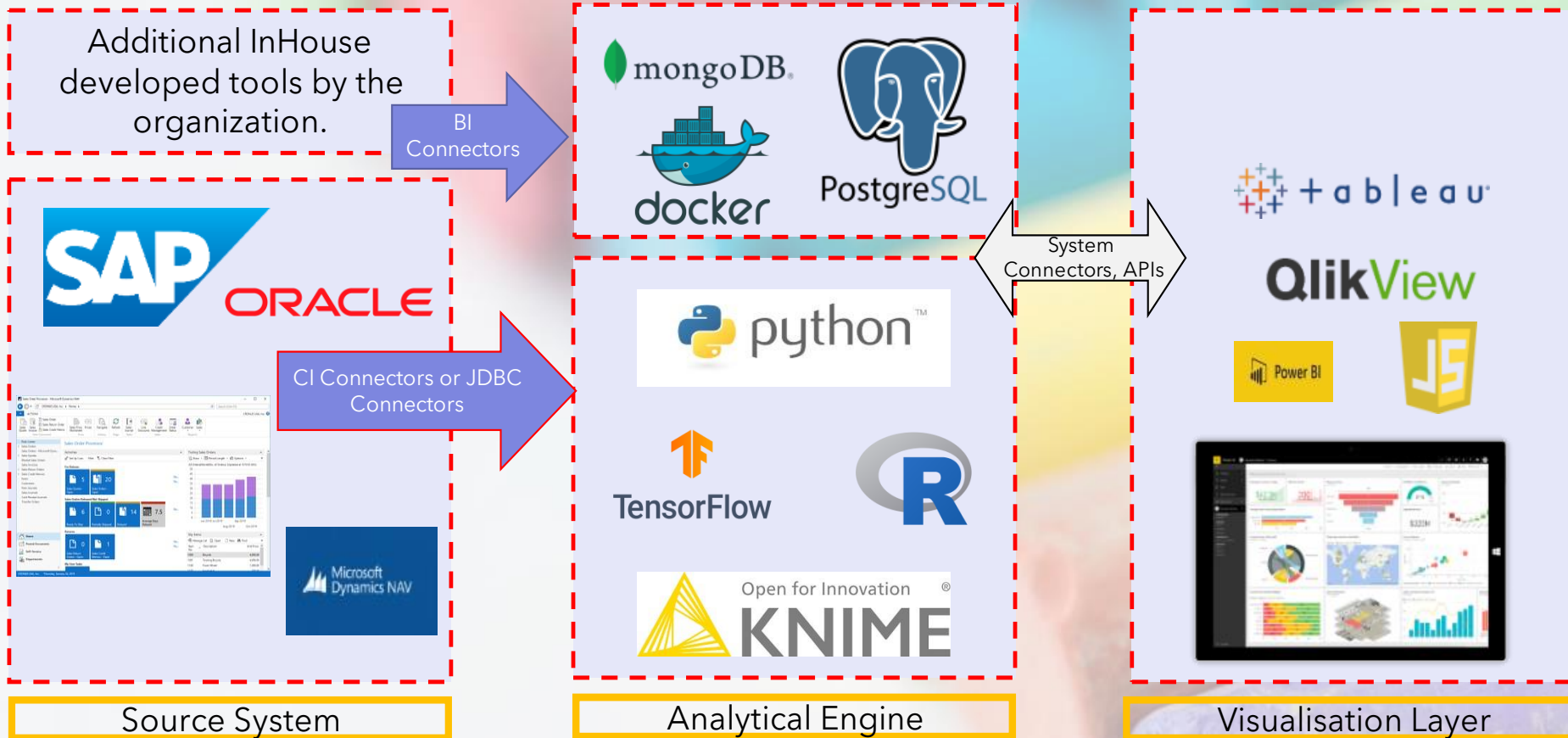


www.ajalabs.ai





# System Architecture



- **Plug and Play Features** ~ Pre-built Business & ML based algorithms on SAP ERP System so that no changes are done to the core ERP.
- **Data Lake** ~ Integrating Internal & External System to have comprehensive data base with agnostic approach on Data Lakes
- **Real time Analytics** ~ Triggers near real time alert against false claims/payouts for corrective action



# How it Works

**1** An event in your system (e.g Manual Payment in system)

Post Outgoing Payments Enter partial payments

Distribute diff. Charge off diff. Editing options Write Off Difference Automatically (AD)

Standard Partial Pmt Res.items Withhidg tax

Account Items 241 Patel Brothers

| Document   | D  | Docume      | P | Bus | Day | Net amount | Payment amount | R. |
|------------|----|-------------|---|-----|-----|------------|----------------|----|
| 100000527  | SA | 10/10/20131 |   |     | 0   | 7,760.00-  |                |    |
| 1900000997 | KR | 10/10/20131 |   |     | 14  | 2,000.00-  | 1,500.00-      |    |
| 1900000998 | KR | 10/10/20131 |   |     | 14  | 3,000.00-  |                |    |
| 1900000999 | KR | 10/10/20131 |   |     | 14  | 4,000.00-  |                |    |
| 1900001000 | KR | 10/10/20131 |   |     | 14  | 5,000.00-  |                |    |
| 1900001001 | KR | 10/10/20131 |   |     | 14  | 6,000.00-  |                |    |
| 1900001002 | KR | 10/10/20131 |   |     | 14  | 7,000.00-  |                |    |

Editing status

|                              |     |                     |           |
|------------------------------|-----|---------------------|-----------|
| Number of items              | 7   | Amount entered      | 1,500.00- |
| Display from item            | 1   | Assigned            | 1,500.00- |
| Reason code                  |     | Difference postings |           |
| Currency                     | EUR |                     |           |
| Display in clearing currency |     | Not assigned        | 0.00      |

**2** Analysis done in the background

Data is sent to CompliBear (agreed frequency)



**3** Notification is sent to a person, or Dashboard in CCM

**Alert**

Amit Gupta, AP Accountant, Unit; Bangalore

**Reason for alert**

- ✓ [Bank account changed before payment](#)
- ✓ [Invoice from dormant Vendor](#)
- ✓ [Invoice against aged PO](#)

**4** Continuously improves the results using machine learning



# CompliBear<sup>©</sup> : Sample Case Studies



## Procurement & Account Payable

- Identify collusion with Vendor
- Fraud and Revenue leakage in Account Payable
- Recovery Audit
- Overall Vendor Selection Model (ML)

## Sales & Revenue

- Abberations in Sales
- Revenue Recognition and responsible marketing
- Prediction of Bad debts
- Customer Classification

## Cost Excellence

- Spend classificaiton, detailed analysis and monitoring
- Internal & External Benchmarking
- Cost Saving
- Budgeting and Standard cost controls

## Travel & Expenses

- Fraudulent travel claims
- Expense Classification (NLP and ML)
- GL Classifications
- T&E Policy Analytics
- Manufacturing Lead Analysis

## IT

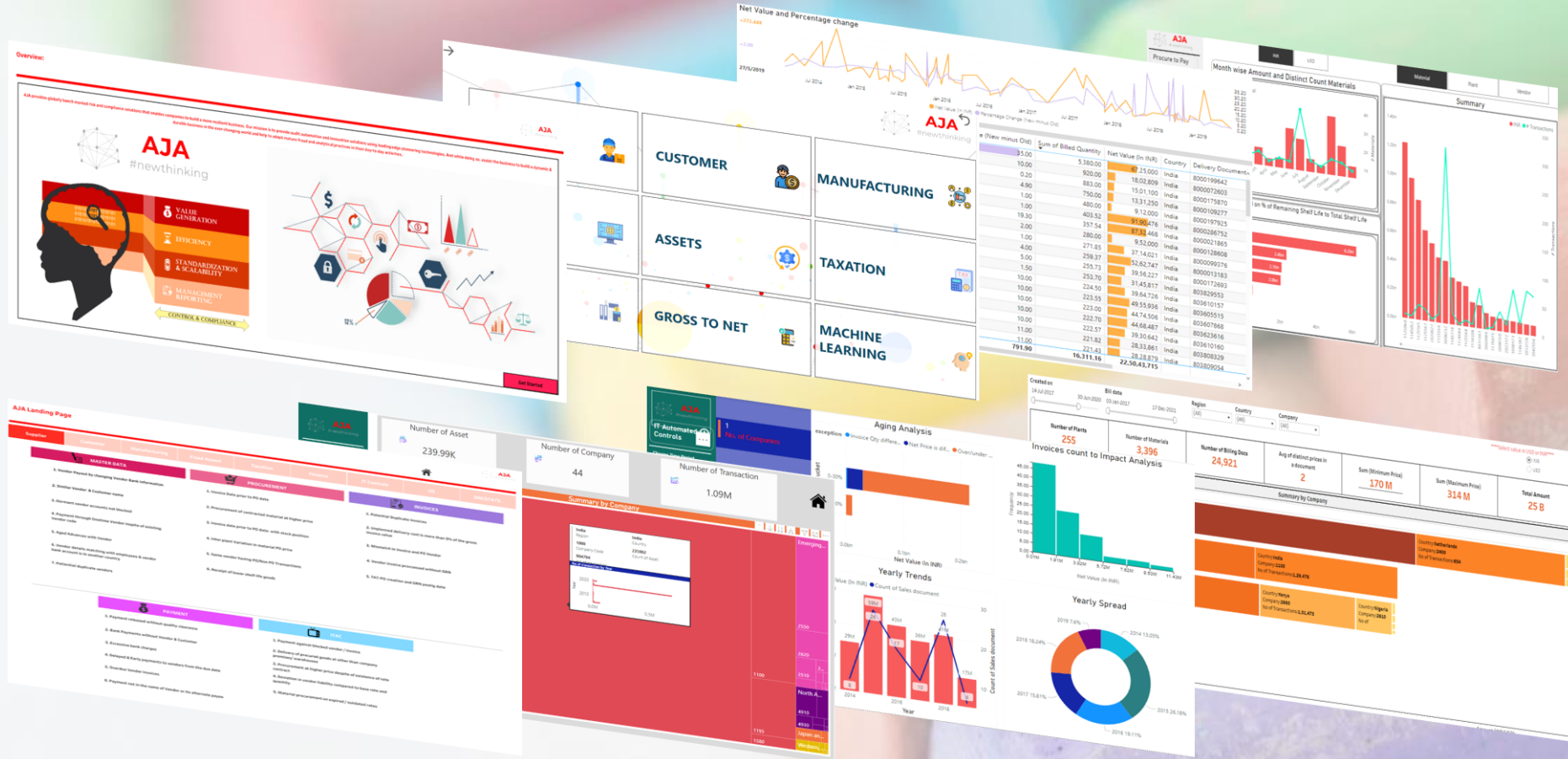
- SAP BASIS
- GRC PC and AC
- Change Management
- Direct Changes to ERP
- ITAC & ITGC Review
- Configuration and Tolerance Limit Checks



# CompliBear<sup>©</sup> : illustrations



Innovation Unleashed: AJA Labs



www.ajalabs.ai





# Engagement Model – Transforming the way business thrive



## Optimum mix of Domain & Technology

Our products have data analytical expertise coupled with Artificial Intelligence and Machine Learning will add value to your risk assessment processes, and help you to deliver best solutions with improved quality coverage. We look forward to help you in bridging the gap between “now” and “next”.





# Our Experiences




1  
Vision



90+ POC



100 +  
Intelligent brains




730+  
Man-Years of  
Experience



27 +  
AI & ML based  
Intelligent Solutions



80 + Clients Served



10 + Partners







# Our Partners



Open for Innovation  
**KNIME**

**NASSCOM**



Microsoft

celonis

dun & bradstreet



**ISACA**



**K B A**



www.ajalabs.ai

Innovation Unleashed: AJA Labs





# Success Story – India's Largest Pharmaceutical Company

## Business Problem

Due to large volume of data, the company designed controls to detect and prevent any form of inconsistencies. However, the adequacy and effectiveness of controls in place is not sufficient to monitor such large sets of data and operations.

## Scope of Work

Company wanted to automate its data analytical procedure and visualization to identify any revenue leakages and fraud detection

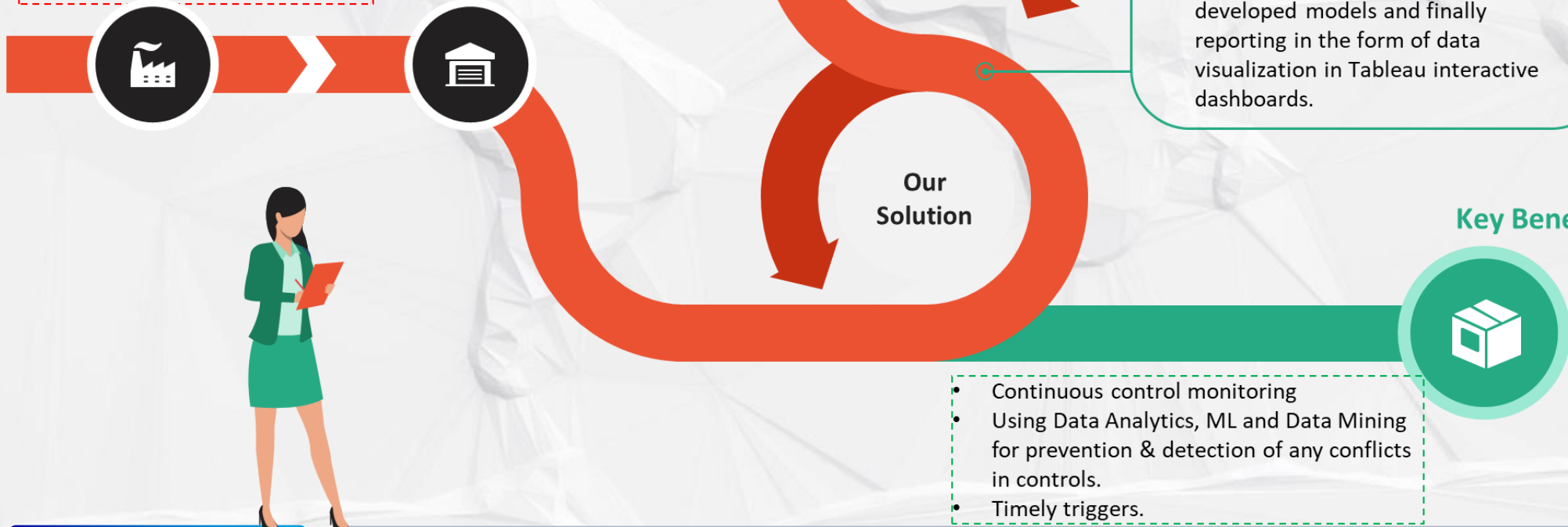
- Design & implement the entire infrastructure to ensure automated data flow pipeline.
- Develop Machine Learning models and data analytical scripts.
- Develop and automate the entire process of data capture from SAP, movement within Databases, formatting, data analysis using developed models and finally reporting in the form of data visualization in Tableau interactive dashboards.

Our Solution

Our Solution

## Key Benefits

- Continuous control monitoring
- Using Data Analytics, ML and Data Mining for prevention & detection of any conflicts in controls.
- Timely triggers.



www.ajalabs.ai





# Success Story – One of the largest HiTech Company

## Business Problem

Process management and improvement was a back burner issue for the organisation. And the lack of proper connection between business processes and Enterprise information system leads to delays and leaks.

## Scope of Work

Company had multiple systems integrated and process flow through many departments. Develop process models to assess and mitigate the bottlenecks and deviations



- Read data related to the business processes and transform the data to event logs.
- Visualize the end-to-end processes
- Using Key Process Performance Indicators (KPPIs) to highlight opportunities of process improvement.
- Focus, fix and prioritize.

## Key Benefits



- Assists in quick audit of business processes
- Detect potential problem before a severe negative impact.
- Finding where things are wrong and why.



www.ajalabs.ai

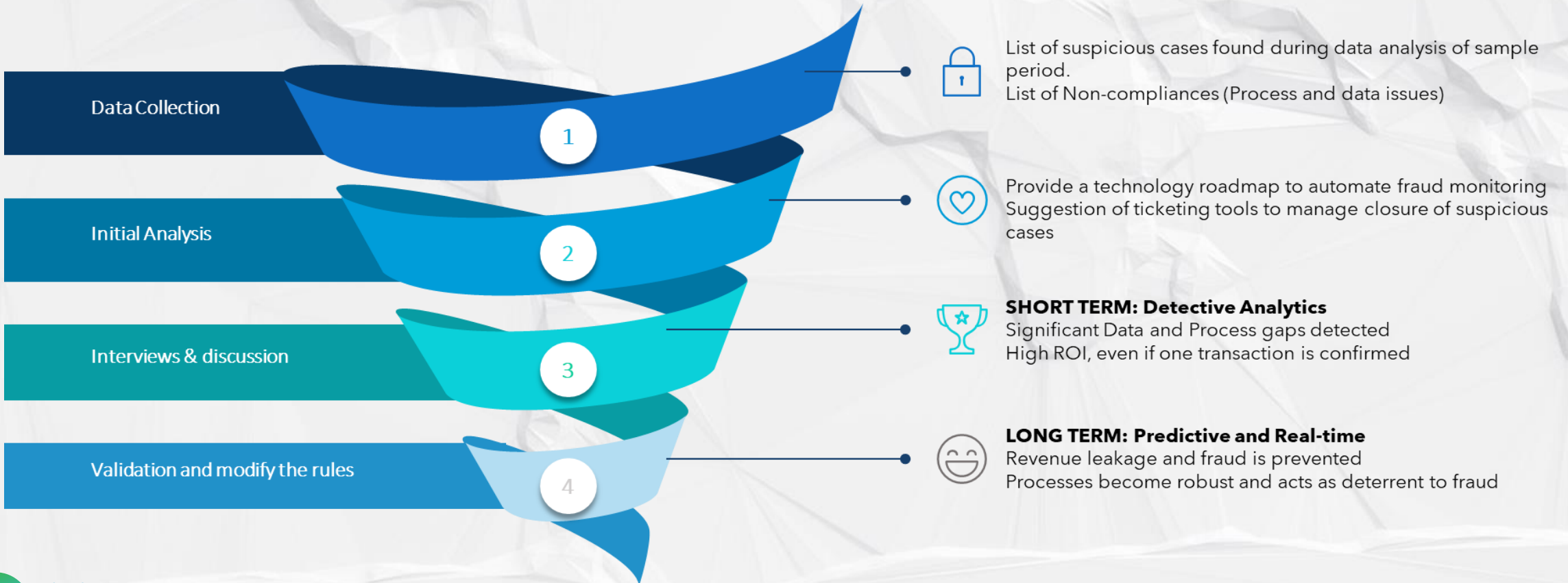




# What Next ? Start a Pilot Project



This includes **2 months free access** to CompliBear<sup>®</sup> license. The only cost during this is the cost of any OPE during the period which will be charged back at the actuals.





# Find and Contact Us

## Satisfaction Factors



Level 1  
Quality



Level 2  
Experience



Level 3  
Affordable



Sanyam Jangir  
sanyam@ajalabs.ai

[www.ajalabs.ai](http://www.ajalabs.ai)



+91-77348 48060  
/ +1 630 3987329

**/\* Think Finance.  
Find Science.  
Build Art. \*/**

www.ajalabs.ai

